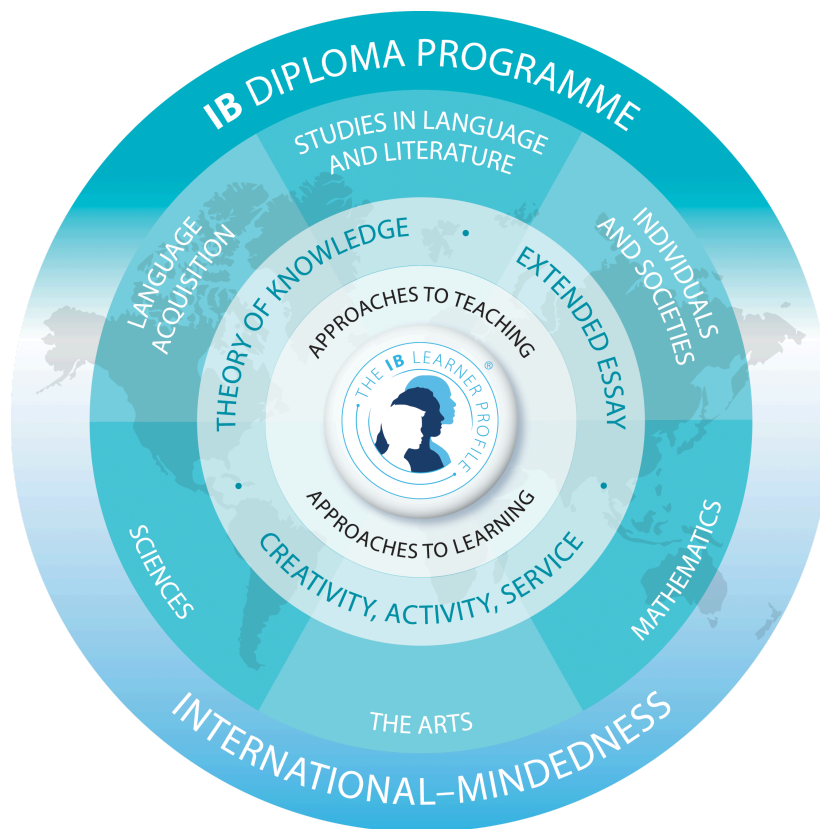


Merivale IB Diploma Programme

2023-2024



Group	Title	Merivale
I	Studies in Language and Literature	English
II	Language Acquisition	French, Spanish
III	Individuals and Societies	Geography, History, Digital Societies
IV	Sciences	Biology, Chemistry, Physics
V	Mathematics	Mathematics
VI	The Arts	Instrumental Music, Visual Arts

Merivale High School IB Diploma Requirements	
<ul style="list-style-type: none"> ● one credit from each of Group I, II, III, IV and V ● one credit from Group VI <u>or</u> a second credit from Group II, III or IV ● TOK (course, presentation, essay) ● CAS ● Extended Essay 	<ul style="list-style-type: none"> ● Must write at least three but no more than four HL exams. ● Students must achieve at least 24 points and a minimum of 12 points in their HL subjects. ● Students who receive “N” in any course or IB requirement will not receive the IB Diploma. This includes failure to complete CAS. ● up to 7 points per exam + 3 points for TOK/EE (Maximum = 45 pts)

Pathways - underlined course codes indicate examining courses

Subject	Gr.	Grade 9	Grade 10	Grade 11	Grade 12
English Literature (Language A)	I	ENL1WE	ENG2DE	ENG3UE	<u>ENG4UE (SL)</u> or <u>ENG4UE (HL)</u>
French - SL and HL (Language B)	II	FSF1DE or FIF1D	FSF2DE or FIF2D	FSF3UE or FIF3UE	<u>FSF4UE (SL or HL)</u> or <u>FIF4UE (SL or HL)</u>
Spanish - SL (Spanish B)	II	LWSBD (taken in grade 9 or 10)			
			LWSCUE (taken in grade 10 or 11)		
		<u>LWSDUE (SL)</u> (taken in grade 11 or 12)			
Spanish - HL (Spanish B)	II		LWSBD	LWSCUE	<u>LWSDUE (HL)</u>
Spanish - ab initio SL	II		LWSBD	LWSCUE	<u>LWSDUE</u> (<u>ab initio SL</u>)
Digital Societies	III			<u>HSB4UE (SL)</u>	
Geography - SL	III	CGC1DE or CGC1DJ	CGF3ME	<u>CGW4UE (SL)</u>	
Geography - HL	III	CGC1DE or CGC1DJ		CGF3ME	<u>CGW4UE (HL)</u> or <u>CGW4UE (SL)</u>
History	III		CHC2DE or CHC2DJ	CLN4UE	<u>CHY4UE (SL)</u> or <u>CHY4UE (HL)</u>
Biology	IV	SNC1WE or SNC1WJ	SNC2DE or SNC2DJ	SBI3UE	<u>SBI4UE (SL)</u> or <u>SBI4UE (HL)</u>
Chemistry	IV	SNC1WE or SNC1WJ	SNC2DE or SNC2DJ	SCH3UE	<u>SCH4UE (SL)</u> or <u>SCH4UE (HL)</u>

Physics	IV	SNC1WE or SNC1WJ	SNC2DE or SNC2DJ	SPH3UE	<u>SPH4UE (SL)</u> or <u>SPH4UE (HL)</u>
Math Approaches and Analyses - HL	V	MTH1WE	MCR3U1	MHF4U1	<u>MCV4U1 (HL)</u>
Math Approaches and Analyses - SL	V	MTH1WE	MCR3U1 or MCR3U2	MHF4U2	<u>MCV4U2 (SL)</u>
Math Applications & Interpretations - SL	V	MTH1WE	MCR3U2	<u>MDM4U2 (SL)</u>	Any 4U Math (optional)
Music	VI	AMU10 (required) + AMR10 (recommended)	AMU20 (optional) + AMR20 (optional)	AMU3ME (required) + AMR3M (recommended)	<u>AMU4ME (SL)</u> (required) + AMR4M (recommended)
Music	VI	AMU10 (required) + AMR10 (recommended)		AMU3ME (required) + AMR3M (recommended)	<u>AMU4ME (SL)</u> (required) + AMR4M (recommended)
Visual Arts - SL	VI	AVI10 (taken in grade 9 or 10)		AVI3ME (taken in grade 10 or 11)	<u>AVI4ME (SL)</u> (taken in grade 11 or 12)
Visual Arts - HL	VI	AVI10	AVI3ME	AVI4ME	<u>AWM4ME (HL)</u> or <u>AWM4ME (SL)</u>
Theory of Knowledge	TOK			HZT4UE (takes place over two years)	

IB Schools of Ontario Table of Equivalence

IB DP Grade	Ontario Percentage Range
7	97% - 100%
6	93% - 96%
5	84% - 92%
4	72% - 83%
3	61% - 71%
2	50% - 60%
1	Failing Grade